

LoRaWAN Latching Solenoid Valve Controller



Smart Agriculture, Smart Building, Smart City, Smart Facility, Smart Farm, Smart Factory

SKU: WSLRW-LSV

LORAWAN LATCHING SOLENOID VALVE CONTROLLER WSLRW-LSV



☒ Safe Zone

☐ Hazardous Zones

WSLRW-LSV is a LoRaWAN Latching Solenoid Valve Controller to control external Latching Solenoid Valve. The ultra-low power design allows the Valve to run in 5 years with batteries (depending on configuration). The valve will transmit data in kilo-meters distance to the LoRaWAN gateway, any brand on the market.

This LoRaWAN Latching Solenoid Valve Controller valve is the best choice for an Irrigation System for a Garden, Smart Farm, or Hydroponic Farm. It can be used for FCU in HVAC or any water supply line in a Facility or Building.

Applications

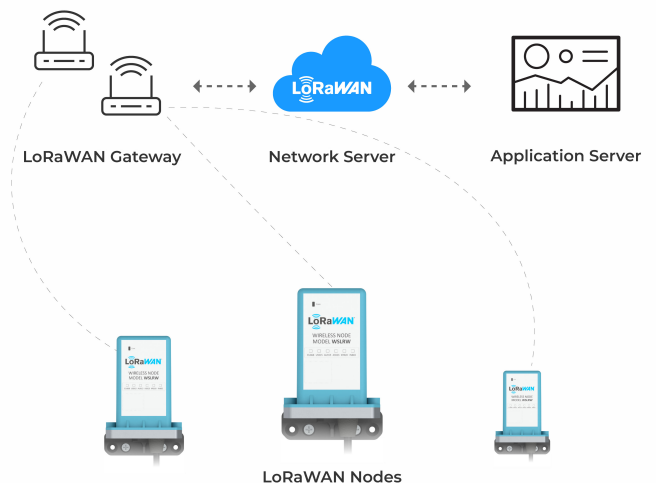
Smart Irrigation, Water Supply System, Water Level Control, Oil Level Control

Notes For Applications

- **Voltage and Current Requirements:** matches those of the solenoid valve.
- **Pulse Duration Control:** generate precise pulse durations to reliably switch the valve states.
- **Polarity Reversal:** polarity reversal to switch the valve between open and closed states.
- **Power Consumption:** Consume low energy for battery-operated device
- **Environmental Compatibility:** operate effectively under the environmental conditions
- **Integration with Existing Systems:** easily integrate with existing systems.

- ☒ **LoRaWAN communication**
LoRaWAN communication standard to allow the device connect to any LoRaWAN Gateway on the market.
- ☒ **5-Year battery**
Ultra-low power technology from Daviteq allow to last up to 5 years with 02 batteries.
- ☒ **Multi-control modes**
Schedule Control, Instant Control, Power-on Control, Fall-back Control
- ☒ **Easy integration to almost solenoid valves**
Configurable pulse width to match with almost solenoid valves on the market

LORAWAN LATCHING SOLENOID VALVE CONTROLLER WSLRW-LSV



SYSTEM ARCHITECTURE

DAVITEQ TECHNOLOGIES INC

Ho Chi Minh City, VN | Koblenz, DE | Melbourne, AU | Zurich, CH

+84.28.6268.2523 / 6268.2524

info@daviteq.com

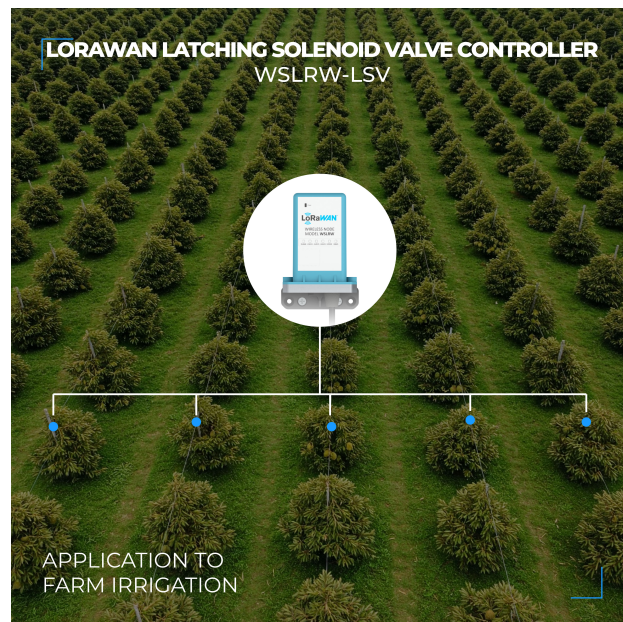
www.iot.daviteq.com

Created date: Mar-12-2025

Updated date: Mar-14-2025

Specification

Cable	2 wires for control pulse of a solenoid valve
Control function	Pulse control (Positive pulse for open control and negative pulse for close control)
Pulse width	Configurable, default of 40ms for HUNTER valve and RAIN BIRD valve
Control mode	Schedule Control, Instant Control, Power-on Control, Fall-back Control
COMMUNICATION	
SF Factors	SF7~SF12 for EU868, RU864, KR920, AS923 and SF7 for US915, AU915, and IN865
	undefined
Antenna	Internal Antenna 2 dbi
Power Supply	Primary batteries 01 x AA size 3.6VDC for LoRaWAN and 9V for valve control (battery not included)
RF Frequency and Power	860~930MHz, 14~20 dBm, configurable for zones: EU868, IN865, RU864, KR920, AS923, AU915, US915
Protocol	LoRaWAN Class A or Class C V1.0.3
Data sending modes	interval time, alarm and manually triggering by magnetic key
Alarm function	Yes
Remote control via downlink	Class A or Class C mode
RF Module complies to	ETSI EN 300 220, EN 303 204 (Europe) FCC CFR47 Part15 (US), ARIB STD-T108 (Japan)
Ambient working temperature	-40~85°C
Dimension	W78 x H114 x D48
Net-weight	310g (without batteries)
Housing	Engineering plastic, IP65
Mounting	Wall mount



LORAWAN LATCHING SOLENOID VALVE CONTROLLER
WSLRW-LSV

LoRaWAN latching valve controller
connects with *HUNTER* valve

LoRaWAN latching valve controller
connects with *RAIN BIRD* valve



PGM-101-G-B



PGA Series

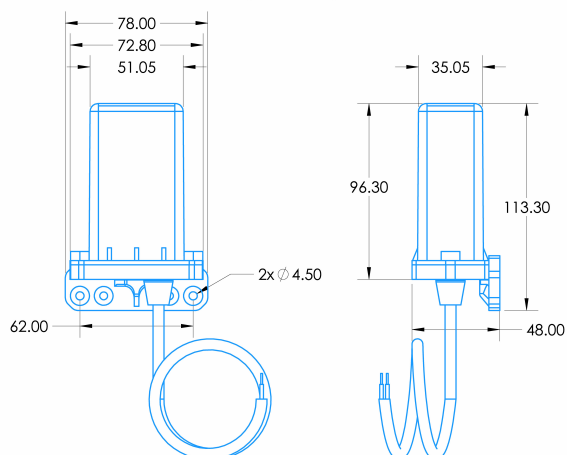
RECOMMENDED
EXTERNAL LATCHING SOLENOID VALVES

LORAWAN LATCHING SOLENOID VALVE CONTROLLER
WSLRW-LSV



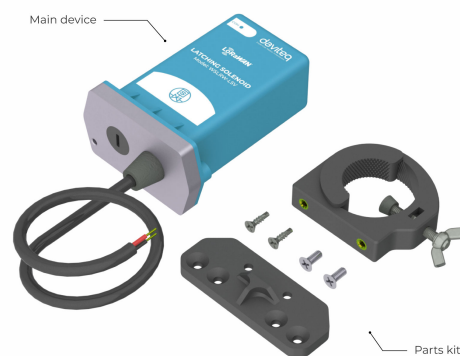
INSTALLATION ON
EXTERNAL SOLENOID VALVE

LORAWAN LATCHING SOLENOID VALVE CONTROLLER
WSLRW-LSV



DIMENSION DRAWING OF
WIRELESS NODE (Unit: mm)

LORAWAN LATCHING SOLENOID VALVE CONTROLLER
WSLRW-LSV



PRODUCT PACKAGE

DAVITEQ TECHNOLOGIES INC

Ho Chi Minh City, VN | Koblenz, DE | Melbourne, AU | Zurich, CH

+84.28.6268.2523 / 6268.2524

info@daviteq.com

www.iot.daviteq.com

Created date: Mar-12-2025

Updated date: Mar-14-2025

Ordering Information

WSLRW-LSV-01	LORAWAN LATCHING SOLENOID VALVE CONTROLLER, SINGLE VALVE PULSE OUTPUT 9V, 860~930MHZ
--------------	--