

Sigfox PT100 Input Sensor



Smart Agriculture, Smart Building, Smart City, Smart Energy, Smart Facility, Smart Factory, Smart Farm, Smart Retail, Smart Utilities

SKU: WSSFC-PT100

SIGFOX PT100 INPUT SENSOR WSSFC-PT100



sigfox



10-Year



IP67
WEATHERPROOF



WSSFC-PT100-H1.PNG



☒ Safe Zone

☐ Hazardous Zones

WSSFC-PT100 is a Sigfox-ready node with modular design connected to PT100 temperature sensor, based on 10-year experience in design and manufacturing Industrial sensor of Daviteq Company. It has been factory pre-calibrated for high accuracy and quick set-up. The ultra-Low power design and smart firmware allow the sensor to last up to 10 years with 02 x AA battery (depending on configuration). The sensor will transmit data in kilo-meters distance to Sigfox base station. WSSFC-PT100 can support all regions of Sigfox network in over the World, RC1, RC2, RC3, RC4, RC5, RC6, RC7. Some typical applications are temperature monitoring for factories, agriculture, boilers, ...

Applications

Temperature Monitoring, Process Monitoring, Safety Monitoring

Notes For Applications

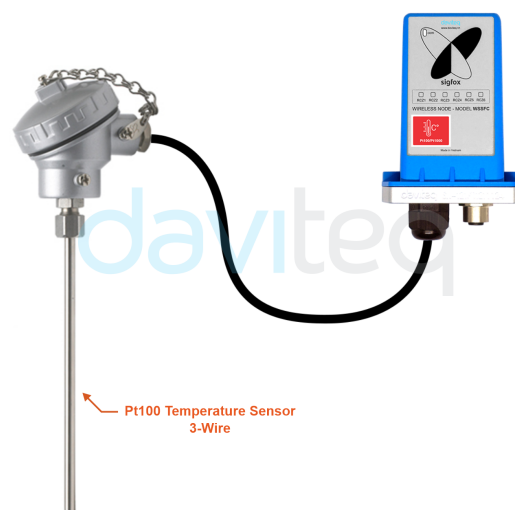
☒ **Sigfox Ready**
Device are best operating performance on the SIGFOX network

☒ **10-Year battery**
Ultra-low power sensing technology from Daviteq with Ultra-low power wireless technology allow the sensor can last up to 10 years with 2 x AA batteries 1.5VDC

☒ **Pre-calibrated**
Sensors are pre-calibrated at factory to deliver high accuracy and quick installation

☒ **For Outdoor**
IP67 design for both Indoor and Outdoor applications and easy cleaning

CONNECT WITH PT100 TEMPERATURE SENSOR



WSSFC-PT100-H2.PNG

DAVITEQ TECHNOLOGIES INC

Ho Chi Minh City, VN | Koblenz, DE | Melbourne, AU | Zurich, CH

+84.28.6268.2523 / 6268.2524

info@daviteq.com

www.iot.daviteq.com

Created date: Dec-21-2022

Updated date: Aug-28-2024

1/4

Specification

Input	PT100 Temperature Sensor
Accuracy	0.05%
Sensor port connector	PG9 Connector
COMMUNICATION	
Sigfox zones	RC1~RC7
Antenna	Internal Antenna 2.0 dbi
Data sending modes	Interval time and when alarm occurred
Battery	02 x AA Type 1.5VDC, working time up to 10 years (depends on configuration)
RF Module complies to	CE, FCC, ARIB
Working temperature	-40~60°C (using Energizer® Lithium Ultimate AA battery)
Dimensions	H118xW73xD42
Net-weight	250g
Housing	Polycarbonate & POM plastic, IP67

DAVITEQ TECHNOLOGIES INC

Ho Chi Minh City, VN | Koblenz, DE | Melbourne, AU | Zurich, CH

+84.28.6268.2523 / 6268.2524

info@daviteq.com

www.iot.daviteq.com

Created date: Dec-21-2022

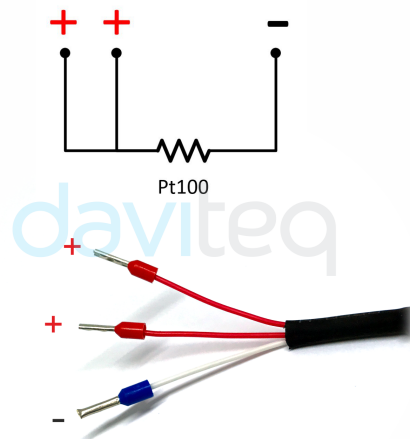
Updated date: Aug-28-2024

SIGFOX NODE CONNECT WITH PT100 TEMPERATURE SENSOR VIA PG9 CONNECTOR



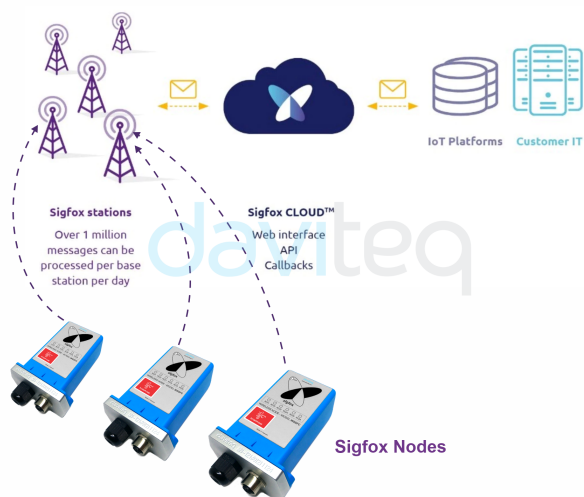
WSSFC-PT100-H3.PNG

WIRING THE PT100 TEMPERATURE SENSOR



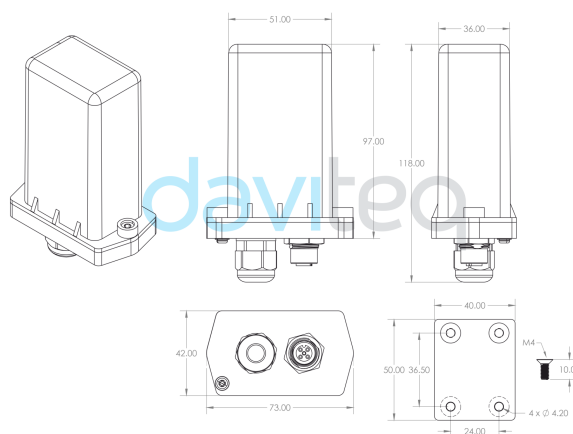
WSSFC-PT100-H4.PNG

SYSTEM ARCHITECTURE



WSSFC-PT100-H5.PNG

DIMENSION DRAWING OF WIRELESS SENSOR (Unit: mm)



WSSFC-PT100-H6.PNG

RECOMMENDED BATTERIES

E91 AA Alkaline battery



-18 .. + 60 °C working temperature
10-year shelf life
3000 mAh Capacity
Price: 1X

L91 AA Lithium battery



-40 .. + 60 °C working temperature
20-year shelf life
3500 mAh Capacity
Price: 3.5X

WSSFC-PT100-H7.PNG

BLANK

WSSFC-PT100-H8.PNG

DAVITEQ TECHNOLOGIES INC

Ho Chi Minh City, VN | Koblenz, DE | Melbourne, AU | Zurich, CH

+84.28.6268.2523 / 6268.2524

info@daviteq.com

www.iot.daviteq.com

Created date: Dec-21-2022

Updated date: Aug-28-2024

3/4

Ordering Information

ITEM CODE	DESCRIPTIONS
WSSFC-PT100-01	Sigfox-Ready PT100 input sensor, Internal antenna, Type AA battery 1.5VDC, IP67, for all RC zones